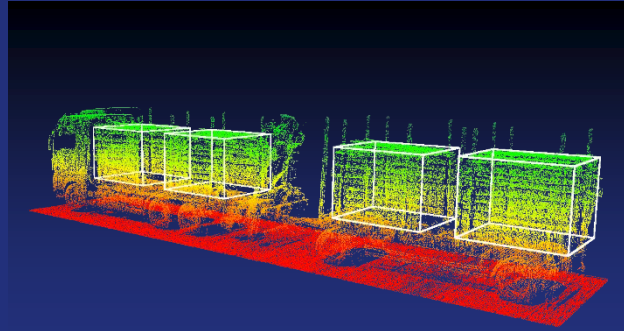


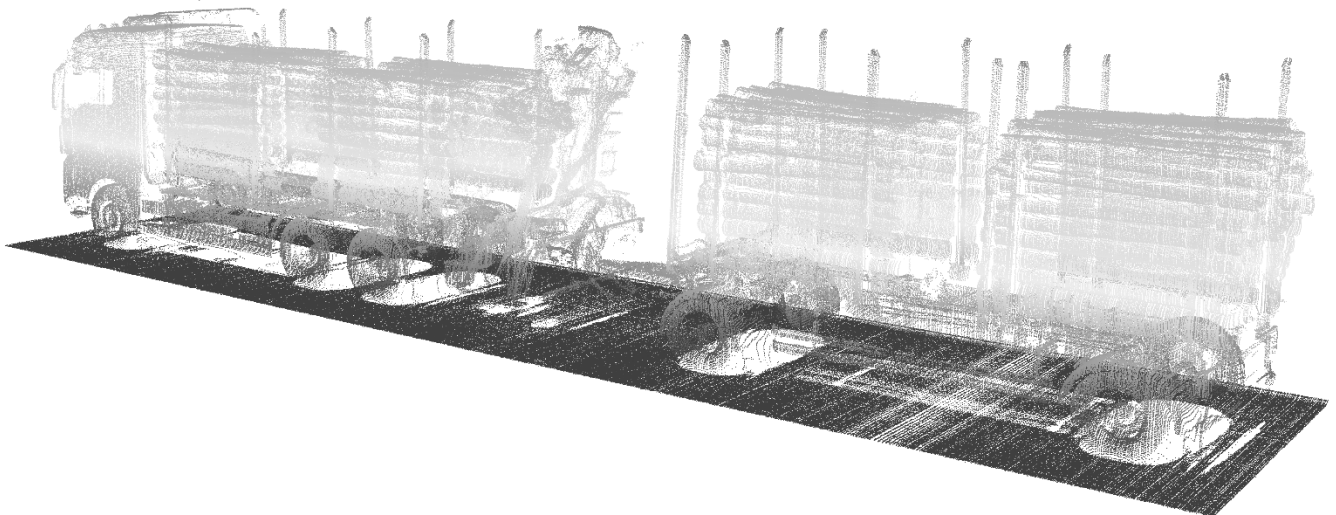
DATA SHEET

JORO-volume

Volume measurement



Maximum accuracy



Jörg Elektronik GmbH

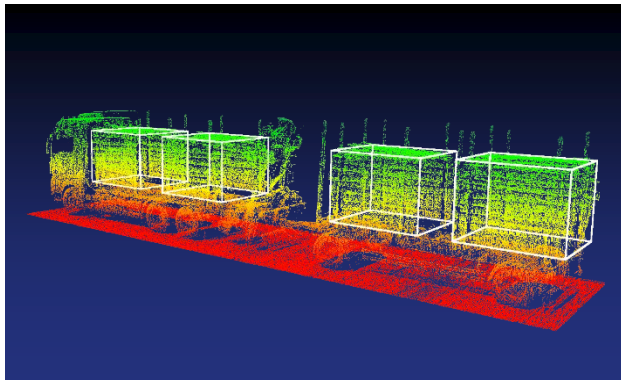
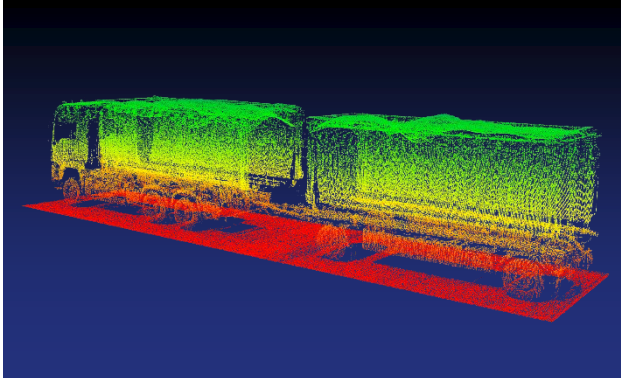
Bauhofweg 2 · 87534 Oberstaufen · Deutschland
Telefon +49 8386 9360-0 · Fax +49 8386 9360-31
Web: www.je-gmbh.de · E-Mail: info@je-gmbh.de



JORO-volume

Volume measurement

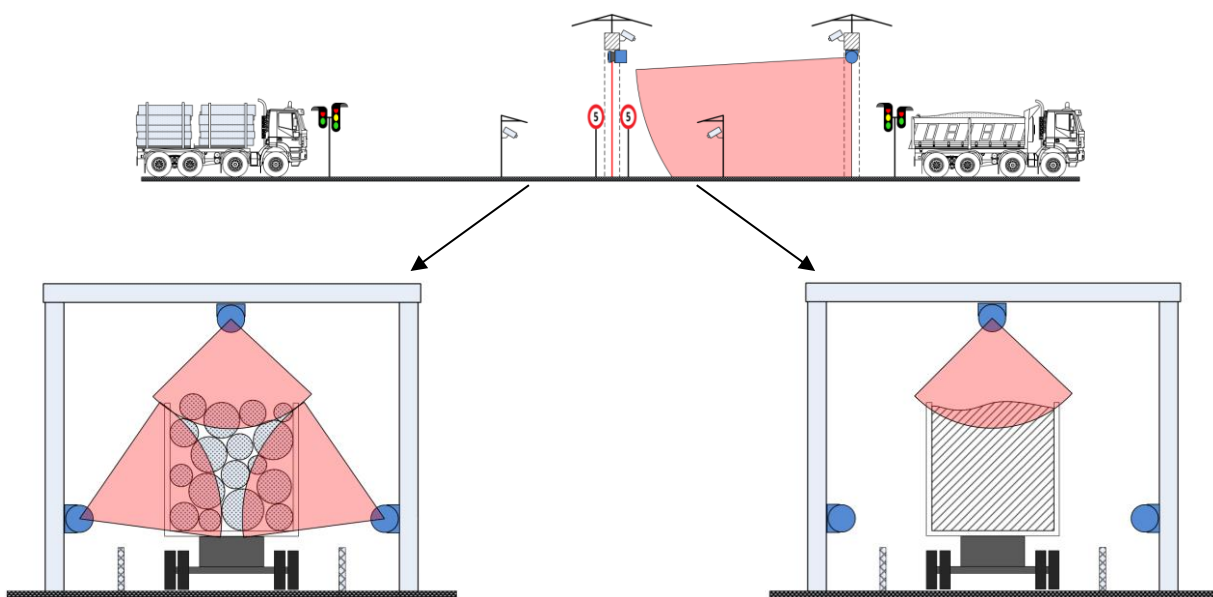
Bulk good & logs



JORO-volume is a new measuring system for all types of logs and bulk goods in which bulk material is measured on the comparison principle. The volume is the calculated difference between measurements of the loaded and the empty truck. Log trucks are measured only once, as their load is detected in packages. JORO-volume is suitable for the measurement of different vehicles from passenger car trailers to articulated lorries. Also, lorries with trailers are recognized automatically and both volumes are evaluated.

For completion, measurement data are saved together with camera pictures at the truck archive and are available in the MySQL database.

JORO-volume uses laser scanners to measure the vehicle speed and the envelope curve of the cargo. These sensors in combination with the evaluation software allow a reliable volume calculation, even with different transit speeds or pause during the measurement process.



Advantages

Technical data

scan range	max. vehicle length 20 m
measuring error	≤ 1,5 % [for V ≥ 20 m ³] ≤ 0,3 m ³ [for V < 20 m ³]
measuring direction	direction independently
vehicle speed	max. 5 km/h
power supply	230 V (AC)
operating temperature	-30 °C ... +50 °C
IP Code	IP67
EMC	CE
laser class	1 (IEC 60825-1), eyesafe

Operation area

- ✓ wood products industry
- ✓ waste disposal
- ✓ energy producers
- ✓ saw mill
- ✓ pellets, wood chips
- ✓ chipboard factory
- ✓ special purpose solutions

Ready to plug in delivery

- ✓ measuring computer
- ✓ sensors and supply unit
- ✓ mechanical fixtures
- ✓ ready to plug in cables
- ✓ installation guide

Measurement

- ✓ contactless laser scanning
- ✓ simple calibration
- ✓ permanent monitoring of all sensors
- ✓ scalability (measurement range, camera systems)
- ✓ web based handling (independent of operating system)

Certification

- ✓ CE certification
- ✓ EU EMC standards

Mechanics

- ✓ 2 sensors (4 sensors)
- ✓ largely independent from mechanics
- ✓ simple adjustment

Environmental influences

- ✓ only minimal protection against mechanical damage needed
- ✓ extended operable temperature range
- ✓ waterproof
- ✓ dustproof
- ✓ robust against vibrations

Standard interfaces, industrial execution

- ✓ standard protocols of popular manufacturers are available
- ✓ configurable protocol for data transfer or database
- ✓ customer specific modifications possible

JORO-volume

JE-Truckarchiv

Database system

JÖRG ELEKTRONIK
Scan technology for the wood industry

Jörg Elektronik GmbH, Bauhofweg 2, 87331 Oberstaufen
Kunde
Reisor

Telefon: +49 8386 93 60-0
Telefax: +49 8386 93 60-31
E-Mail: info@je-gmbh.de
Internet: <http://www.je-erwerb.de>

Abholschein

06.04.2017 10:07
Mitarbeiter Datum Uhrzeit

Ladungstyp: Rundware

201	Lohnunternehmen Sahr	Am Bach	A2
Laufnummer	Speidition	Forstrevier	Forstabteilung

Pos.	Fahrzeug	Material	Kennzeichen	Ladungsvolumen
1	Zugfahrzeug	Stammholz	OA-KC-890	
2	Anhänger	Stammholz	OA-KC-890	



Das ermittelte Ladungsvolumen beträgt 32,18 fm o.R. und wird von Lieferant und Käufer bestätigt.

Bemerkungen:

Lieferant	Käufer
Stempel / Unterschrift	Stempel / Unterschrift

Oberstaufen, 06.04.2017

Geschäftsführer: Ludwig Helm, Thomas Helm
Registrierungsamt: Kempten/Allg. HRB 4112
Ust-ID-Nr.: DE128 793 677

Banken:
Sparkasse Allgäu: IBAN: DE88 7315 0000 0000 3465 99
Hypo-Verkehrsbank: IBAN: DE32 2389 2200 2200 1583 81
Postbank: IBAN: DE82 7001 0000 0003 8968 01

BE: BYLACR0330
BE: HYVDE00070
BE: PSN330333

JE-Truckarchiv

is the useful extension of **JORO-volume** and completes this measuring system.

Calculated volume, picture of truck and load, as well as other important information on driver and truck are combined. Those values are then saved to a database and can be accessed at any time.

The database allows traceability of incoming and outgoing loads and payment of trucks based on measuring data.

Advantages

- ✓ Control on trucks
- ✓ Traceability of deliveries
- ✓ Quality control
- ✓ Overview
- ✓ Automated generating of delivery notes and reports
- ✓ Extendable with JORO-terminal

Function

- ✓ Registration of the truck
- ✓ Measuring of the load
- ✓ Saving of combined values to the database

